



Weekly Stakeholder Snapshot



Location: Sevenoaks Greatness Park
Project: Greatness Pavilion
Client: Sevenoaks Town Council / FC
Project Number: LG - 2395
Report Date: 10/04/2026
Week Number - 024



Patrick Steppel
Project Manager



On-site KPIs:

	Applicable	Comments
Health & Safety inspections completed	Yes	No health and safety issues to report
Programme reviewed	Yes	The programme has been reviewed, and we are currently on programme
Internal quality inspection undertaken	Yes	Not relevant to works on site, Currently.

Weekly Progress to Report:

This week our team has made solid progress on site. All preparation works have now been completed, and the screeder’s have begun laying the screed on the first floor.

Our window and door suppliers have fitted around 80% of the frames and have started installing the glass.

The mechanical team has run the drainage first fix on the ground floor and progressed with the underfloor heating pipework throughout the ground floor of the building.

Meanwhile, our carpentry team has continued with the high-level soffit cladding and the first-floor joist work, both of which are now approximately 90% complete.



Early warnings and noticeable delays to the programme: No early warnings to report on site

Weekly Look Ahead:

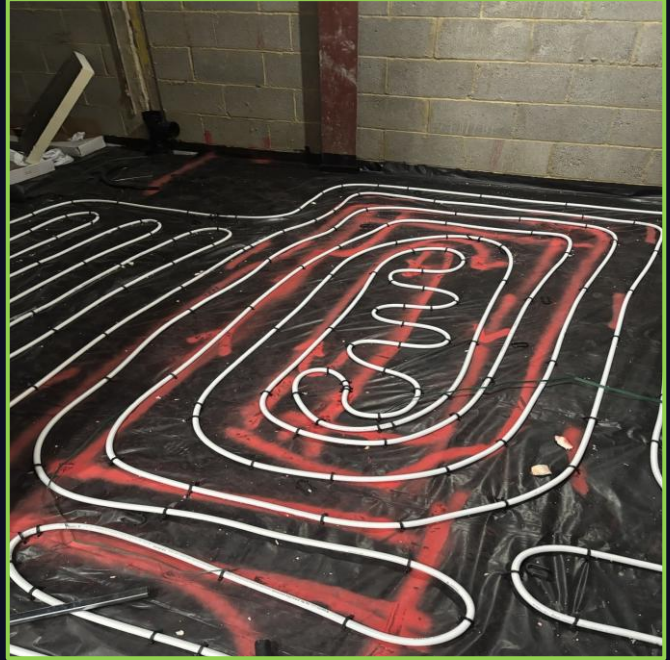
Next week our window and door supplier will complete the installation of the remaining frames and glass.

Our carpentry team will finish the cladding and joist work before moving on to the low-level cladding on the park-side elevation.

The mechanical team will shift their focus to the first floor, where they will run all drainage first-fix pipework to the required specified locations.



Weekly Progress Photos:



Social Values latest highlights:

We installed two 'Walls of Kindness' on the hoarding of sites in Bromley for public coat donations. They have the simple message 'Take a coat if you're cold. Leave a coat if you no longer need it.' Both sites are in high footfall areas within the community, we felt it was the perfect way to spread some warmth and kindness.

We held a Construction Assembly at Seven Kings Primary School for KS2 students after being contracted to add new SEN rooms. The children were really engaged and had lots of questions about the construction industry. We took them through not only the work completed at their school but also the different items of PPE, other safety equipment, tools, building materials and the different trades.

We continued foodbank donations to Trussell Trust across London boroughs over the Summer holidays. Food banks experience an unprecedented level of demand during the school summer break. Some households struggle to feed children who ordinarily get free school meals during term-time so knew it would make a real impact.

We ran a Careers in Construction workshop at Canvas Walthamstow after completing room conversions within this student accommodation venue for university students looking to enter the Construction industry. It was a great way to close this project and have some engaging conversations.



Social Values continued:

We donated 200 Easter eggs to the local Children's Ward at PRUH (Princess Royal University Hospital). Hopefully, these brought smiles to some brave young faces. A huge thank you to the amazing staff for the incredible work they do every single day. We're proud to have supported an important part of our community.



We invited the nursery children to visit the construction site at St Michael's Primary School to come and have a look around the new replacement nursery block building, currently under construction. It was a fantastic opportunity for the little ones to see the progress and get a sneak peek at the new learning space.



We were delighted to continue our engagement with a Ilford County High School by taking part in their recent Careers Fair, aimed at Year 10 and Year 12 students exploring future career options. Our team shared insights into the wide range of roles within the construction and built environment sectors.



We built an outdoor sensory musical area at West Byfleet Infant School for the KS1 students. This initiative not only enriches the school's outdoor space but also aligns with the company's commitment to supporting local education and wellbeing.

